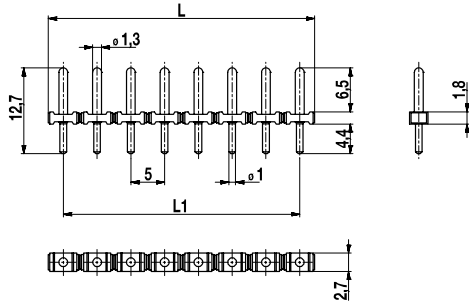
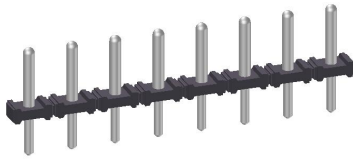


# 971-SLR

Pin strip

Soldering area  $\varnothing$  1 mm; plug-in area  $\varnothing$  1,3 mm



$L1 = (\text{number of poles} - 1) \times \text{pitch}$

## Part Numbers

No. of poles	971-SLR	Length	PU
2	12.893.811	9,50	1000
3	13.893.811	14,50	500
4	14.893.811	19,50	500
5	15.893.811	24,50	250
6	16.893.811	29,50	250
7	17.893.811	34,50	250
8	18.893.811	39,50	250
9	19.893.811	44,50	250
10	20.893.811	49,50	100
11	21.893.811	54,50	100
12	22.893.811	59,50	100

further number of poles on request

## General Information

Pitch	5 mm
No. of poles	2 - 12
Usable with	plug connector of series 115-F, 950-FL-DS, 950-TFL-DS, 950-NAF-DS, 950-GFL-DS, 950-NLFL-DS, 950-RFL-DS, 970-FBW-FU(-DS)
Additional Information	Pin strip is suitable for reflow soldering




## Technical Data

Overvoltage Category	III	III	II
Pollution Severity Level	3	2	2
Rated Voltage	250 V	320 V	630 V
Rated Impulse Voltage	4 kV	4 kV	4 kV
Rated Current	10 A		
Soldering process	Wave solder & reflow solder		
Hole in PCB	$\varnothing$ 1,3 mm		
PCB thickness	Wave solder max. 1,6 mm; reflow solder 1,6 - 3,2 mm		

## Material

Moulding	PA HT, black, V-0
Comparative Tracking Index	CTI $\geq$ 600
Insulating Group	I
Temperature Range	-40°C up to 120°C; reflow solder temperature peak max. 255°C acc. to DIN EN 61760-1
Solder pin	$\varnothing$ 1,3 mm (plug-in area) / $\varnothing$ 1,0 mm (soldering area); tin plated brass

## Approvals

	Current [A]	Voltage [V]	Group	AWG	[Nm]
	10 [1]	300	B		
	10 [1]	300	B		
	Current [A]	Voltage [V]	[mm <sup>2</sup> ]		
	13,5	250 [2]			

[1] Above headers with 1.0 or 1.1 mm dia. pins are rated 12A max. with manufacturer's Cat. No. 120-W-111 terminal blocks. Above headers with 1.1 mm or 1.3 mm dia. pins are rated 12A max. with 115-F-111, 115-F-211 and 115-F-118 terminal blocks.

[2] Acc. to IEC 60947-7-4 und IEC 60947-1

## Options / Accessories

- Other plug pin lengths on request
- Other P.C. pin surfaces on request