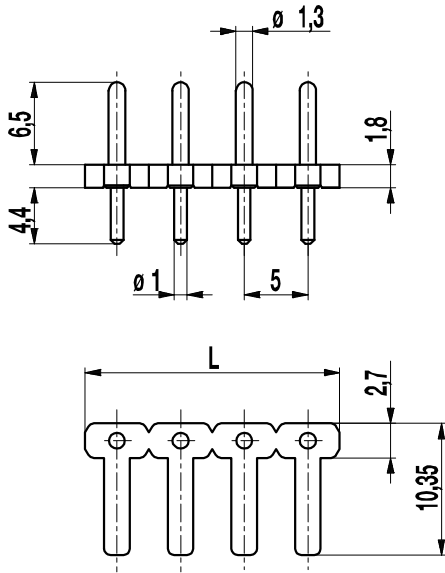
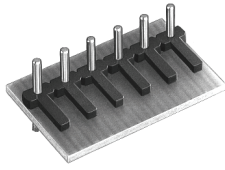


# Pin strip 971-SLW

Soldering area  $\varnothing$  1 mm; plug-in area  $\varnothing$  1,3 mm, with long support



## General Information

Pitch	5 mm
No. of poles	2 - 24
Usable with	all sockets and plugs of series 95-FB und 97-FB, 97-FBW, 97-FBS
Additional Information	Application tip: In combination with 95-FB or 97-FB series socket connectors, printed circuit boards can be directly connected.

## Technical Data

Overvoltage Category	III	III	II
Pollution Severity Level	3	2	2
Rated Voltage	200 V	320 V	320 V
Rated Impulse Voltage	4 kV	4 kV	4 kV
Rated Insulation Voltage	250 V acc. to EN 60998-1		
Rated Current	6 A		
Hole in PCB	$\varnothing$ 1,3 mm		



## Material

Moulding	PBTP, black , V-0
Comparative Tracking Index	CTI 175
Insulating Group	IIIa
Temperature Range	-40°C up to 100°C
Solder pin	$\varnothing$ 1,3 mm (plug-in area) / $\varnothing$ 1,0 mm (soldering area); tin plated brass

## Part Numbers

No. of poles	971-SLW	Length	Pcs
2	12.893.603	10,00	1000
3	13.893.603	15,00	500
4	14.893.603	20,00	250
5	15.893.603	25,00	250
6	16.893.603	30,00	250
7	17.893.603	35,00	250
8	18.893.603	40,00	100
9	19.893.603	45,00	100
10	20.893.603	50,00	100
11	21.893.603	55,00	100
12	22.893.603	60,00	100
13	23.893.603	65,00	100
14	24.893.603	70,00	100
15	25.893.603	75,00	100
16	26.893.603	80,00	100
17	27.893.603	85,00	100
18	28.893.603	90,00	100
19	29.893.603	95,00	100
20	30.893.603	100,00	100
21	31.893.603	105,00	100
22	32.893.603	110,00	100
23	33.893.603	115,00	100
24	34.893.603	120,00	100

## Approvals

	Current	Voltage	Group	AWG	Nm
	10	300	B		
	10	300	B		

## Options / Accessories

- Pitch of 10 mm for larger clearance and creepage distances
- Other pin lengths on request
- Other P.C. pin surfaces on request