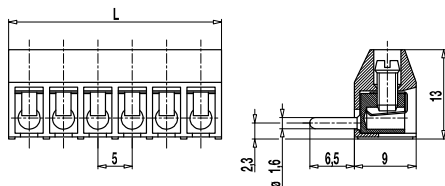
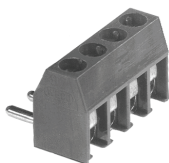


Plug connector 971-SV(-DS)

Screw connection, pin \varnothing 1,6 mm



Part Numbers

No. of poles	971-SV	971-SV-DS	Length	Pcs
2	80.872.152	86.872.152	11,00	250
3	80.872.153	86.872.153	16,00	250
4	80.872.154	86.872.154	21,00	200
5	80.872.155	86.872.155	26,00	100
6	80.872.156	86.872.156	31,00	100
7	80.872.157	86.872.157	36,00	100
8	80.872.158	86.872.158	41,00	100
9	80.872.159	86.872.159	46,00	100
10	80.872.160	86.872.160	51,00	100
11	80.872.161	86.872.161	56,00	100
12	80.872.162	86.872.162	61,00	100
13	80.872.163	86.872.163	66,00	100
14	80.872.164	86.872.164	71,00	100
15	80.872.165	86.872.165	76,00	100
16	80.872.166	86.872.166	81,00	100
17	80.872.167	86.872.167	86,00	100
18	80.872.168	86.872.168	91,00	100
19	80.872.169	86.872.169	96,00	100
20	80.872.170	86.872.170	101,00	100
21	80.872.171	86.872.171	106,00	100
22	80.872.172	86.872.172	111,00	100
23	80.872.173	86.872.173	116,00	100
24	80.872.174	86.872.174	121,00	100
25	80.872.175	86.872.175	126,00	100
26	80.872.176	86.872.176	131,00	100
27	80.872.177	86.872.177	136,00	100
28	80.872.178	86.872.178	141,00	100
29	80.872.179	86.872.179	146,00	100
30	80.872.180	86.872.180	151,00	100
31	80.872.181	86.872.181	156,00	100
32	80.872.182	86.872.182	161,00	100

General Information

Pitch	5 mm
No. of poles	2 - 32
Usable with	socket terminal strips 970-FB, 971-FB

Technical Data

Clamping Range	<i>solid / flexible / AWG</i>		
<i>without wire protector</i>	1 - 6 mm ² / 1 - 4 mm ² / 16 - 10 AWG		
<i>with wire protector</i>	0,75 - 4 mm ² / 0,75 - 2,5 mm ² / 18 - 12 AWG		
Rated Cross Section	2,5 mm ²		
Wire Stripping Length	5,5 mm \pm 0,5 mm		
Overtoltage Category	III	III	II
Pollution Severity Level	3	2	2
Rated Voltage	250 V (200 V)	320 V	630 V (400 V)
Rated Impulse Voltage	4 kV	4 kV	4 kV
Rated Insulation Voltage	250 V acc. to EN 60998-1		
Rated Current	6 A		
Torque	0,5 Nm		
Other specifications	Voltage data in brackets are valid for 9-32 poles types. 2-8 poles types are "no-flame" acc. to glow-wire test.		

Material

Moulding	PA, grey, V-0
Comparative Tracking Index	2-8 poles: CTI \geq 600; 9-32 poles: CTI 400
Insulating Group	2-8 poles: I; 9-32 poles: II
Temperature Range	-40°C up to 100°C
Terminal body	Tin plated brass
Screw	M3; zinc plated steel, blue passivated
Wire protector	Tin plated tin bronze
Plug	\varnothing 1,6 mm; tin plated brass

Approvals

	Current	Voltage	Group	AWG	Nm
	20	300	B	22-12 [1]	0,51
	10	300	D	22-12 [1]	0,51
	20	300	B	26 - 12	0,51
	10	300	D, E	26 - 12	0,51
	Current	Voltage	mm ²		
	17,5	250	2,5		

[1] Min No. 26 AWG for factory-wiring only

Options / Accessories

- Consecutive numbering
- Special marking according to drawing
- Self-adhesive marking strip BST-5,00
- Pitch of 10 mm for larger clearance and creepage distances
- Version with extended wire entrance
- Version with lateral latching elements
- Double wire protector as bridge