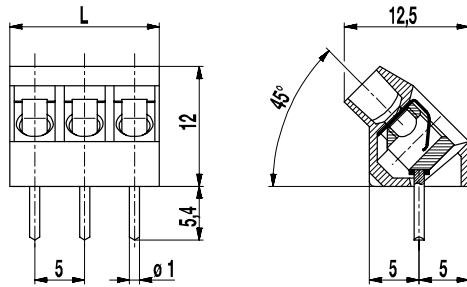


974-FB

Socket terminal strip
Plug connection 45°-angle to PCB



The socket terminal strip 974-FB, inclined version with a pitch of 5 mm is available with 2- to 26-pole design and can be mounted side-by-side without pole loss.

The wire entrance is in a 45° angle diagonal to the PC board. Therefore, this PCB connector is ideal for the assembly in the centre of PCBs. The design of this PCB connector allows space-saving arrangement of consecutive rows of terminals.

The contact pressure is achieved by means of a stainless steel spring with extra-long spring deflection. Due to the high spring forces, it is advisable to select socket terminal strips with only up to 8 poles.

For longer clearance and creepage distances, socket terminal strips are also available in a larger pitch.

Part Numbers

No. of poles	974-FB	Length	PU
2	90.874.032	10,00	250
3	90.874.033	15,00	250
4	90.874.034	20,00	200
5	90.874.035	25,00	100
6	90.874.036	30,00	100
7	90.874.037	35,00	100
8	90.874.038	40,00	100
9	90.874.039	45,00	100
10	90.874.040	50,00	100
11	90.874.041	55,00	100
12	90.874.042	60,00	100
13	90.874.043	65,00	100
14	90.874.044	70,00	50
15	90.874.045	75,00	50
16	90.874.046	80,00	50
17	90.874.047	85,00	50
18	90.874.048	90,00	50
19	90.874.049	95,00	50
20	90.874.050	100,00	50
21	90.874.051	105,00	50
22	90.874.052	110,00	50
23	90.874.053	115,00	50
24	90.874.054	120,00	50
25	90.874.055	125,00	50
26	90.874.056	130,00	50

General Information

Pitch	5 mm
No. of poles	2 - 26
Usable with	plug connector 951-SV




Technical Data

Overvoltage Category	III	III	II
Pollution Severity Level	3	2	2
Rated Voltage	160 V	160 V	320 V
Rated Impulse Voltage	2,5 kV	2,5 kV	2,5 kV
Rated Current	6 A		
Hole in PCB	ø 1,3 mm		
Other specifications	Rated voltage adapted to counterpart 951-SV(-DS)		

Material

Moulding	PA, grey, V-0
Comparative Tracking Index	CTI ≥ 600
Insulating Group	I
Temperature Range	-40°C up to 100°C
Terminal body	Tin plated brass
Solder pin	ø 1 mm; tin plated copper
Spring	Stainless strip steel

Approvals

	Current [A]	Voltage [V]	Group	AWG	[Nm]
	20	300	B		
	10	300	D		
	20	300	B		
	10	300	D, E		
	Current [A]	Voltage [V]	[mm²]		
	13,5	160 [1]			

[1] Acc. to IEC 60947-7-4 und IEC 60947-1

Options / Accessories

- Consecutive numbering
- Special marking according to drawing
- Self-adhesive marking strip BST-5,00
- Pitch of 10 mm for larger clearance and creepage distances
- Other solder pin lengths on request
- Version with lateral latching elements
- With base plate, please see 974-BP

General Information

Pitch	5 mm
No. of poles	2 - 12
Usable with	socket terminal strip 974-FB + plug connector 951-SV

Material

Moulding	PA, grey, V-2
Comparative Tracking Index	CTI ≥ 600
Insulating Group	I
Temperature Range	-40°C up to 100°C