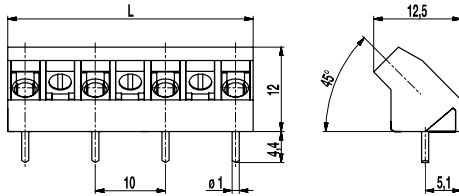
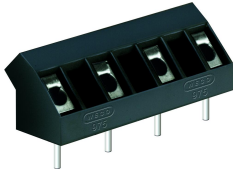


# 975(-DS)

PCB connector

Screw connection 45°-angle to PCB



The PCB connector 975, inclined version with a pitch of 10 mm is available in 2- to 13-pole design.

The wire entrance is in a 45° angle diagonal to the PC board. Therefore, this PCB connector is ideal for the assembly in the center of PCBs. The design of this PCB connector allows space-saving arrangement of consecutive rows of terminals.

Wire protection in DS-design reliably prevents damage to stranded wires by the screw.

The screws are secured against self-loosening.

## Part Numbers

No. of poles	975	975-DS	Length	PU
2	12.874.003	22.874.003	15,00	250
3	12.874.005	22.874.005	25,00	100
4	12.874.007	22.874.007	35,00	100
5	12.874.009	22.874.009	45,00	100
6	12.874.011	22.874.011	55,00	100
7	12.874.013	22.874.013	65,00	100
8	12.874.015	22.874.015	75,00	50
9	12.874.017	22.874.017	85,00	50
10	12.874.019	22.874.019	95,00	50
11	12.874.021	22.874.021	105,00	50
12	12.874.023	22.874.023	115,00	50
13	12.874.025	22.874.023	125,00	50

## General Information

Pitch 10 mm

No. of poles 2 - 13

## Technical Data

Clamping Range *solid / flexible / AWG*

*without wire protector* 1 - 6 mm<sup>2</sup> / 1 - 2,5 mm<sup>2</sup> / 16 - 12 AWG

*with wire protector* 0,75 - 4 mm<sup>2</sup> / 0,75 - 2,5 mm<sup>2</sup> / 18 - 12 AWG

Rated Cross Section 2,5 mm<sup>2</sup>

Wire Stripping Length 6,5 mm ± 0,5 mm

Overvoltage Category	III	III	II
Pollution Severity Level	3	2	2
Rated Voltage	630 V	630 V	1000 V
Rated Impulse Voltage	6 kV	6 kV	6 kV

Rated Insulation Voltage 750 V acc. to EN 60998-1

Rated Current 24 A

Hole in PCB ø 1,3 mm

Torque 0,5 Nm

## Material

Moulding PA, grey, V-0

Comparative Tracking Index CTI ≥ 600

Insulating Group I

Temperature Range -40°C up to 100°C



Terminal body Tin plated brass

Screw M3; zinc plated steel, clear passivated

Solder pin ø 1 mm; tin plated copper

Wire protector Tin plated tin bronze

## Approvals

	Current [A]	Voltage [V]	Group	AWG	[Nm]
	20	300	B	22-12 [1]	0,51
	10	300	D	22-12 [1]	0,51
	20	300	B	26 - 12	0,51
	10	300	D, E	26 - 12	0,51

[1] Min No. 26 AWG for factory-wiring only

## Options / Accessories

- Consecutive numbering
- Special marking according to drawing
- Self-adhesive marking strip BST-10,00
- Longer solder pins up to 95 mm
- Special wire protector for very thin conductors
- Version with additional raised base of 1,6 mm