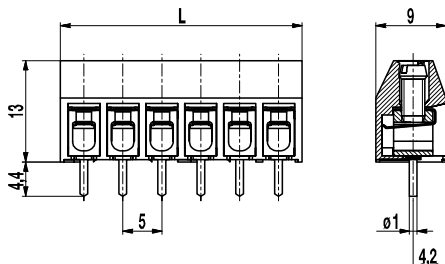
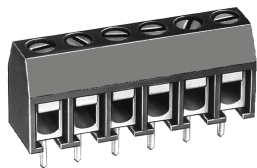


## PCB connector

### 978(-DS)

Screw connection, large conductor space



### Part Numbers

No. of poles	978	978-DS	Length	Pcs
2	30.872.002	40.872.002	11,00	250
3	30.872.003	40.872.003	16,00	250
4	30.872.004	40.872.004	21,00	200
5	30.872.005	40.872.005	26,00	100
6	30.872.006	40.872.006	31,00	100
7	30.872.007	40.872.007	36,00	100
8	30.872.008	40.872.008	41,00	100
9	30.872.009	40.872.009	46,00	100
10	30.872.010	40.872.010	51,00	100
11	30.872.011	40.872.011	56,00	100
12	30.872.012	40.872.012	61,00	100
13	30.872.013	40.872.013	66,00	100
14	30.872.014	40.872.014	71,00	100
15	30.872.015	40.872.015	76,00	100
16	30.872.016	40.872.016	81,00	100
17	30.872.017	40.872.017	86,00	100
18	30.872.018	40.872.018	91,00	100
19	30.872.019	40.872.019	96,00	100
20	30.872.020	40.872.020	101,00	100
21	30.872.021	40.872.021	106,00	100
22	30.872.022	40.872.022	111,00	100
23	30.872.023	40.872.023	116,00	100
24	30.872.024	40.872.024	121,00	100
25	30.872.025	40.872.025	126,00	100
26	30.872.026	40.872.026	131,00	100
27	30.872.027	40.872.027	136,00	100
28	30.872.028	40.872.028	141,00	100
29	30.872.029	40.872.029	146,00	100
30	30.872.030	40.872.030	151,00	100
31	30.872.031	40.872.031	156,00	100
32	30.872.032	40.872.032	161,00	100

### General Information

Pitch	5 mm
No. of poles	2 - 32

### Technical Data

Clamping Range	<i>solid / flexible / AWG</i>		
<i>without wire protector</i>	0,75 - 6 mm <sup>2</sup> / 0,75 - 4 mm <sup>2</sup> / 18 - 10 AWG		
<i>with wire protector</i>	0,34 - 6 mm <sup>2</sup> / 0,34 - 4 mm <sup>2</sup> / 22 - 10 AWG		
Rated Cross Section	2,5 mm <sup>2</sup>		
Wire Stripping Length	6,5 mm ± 0,5 mm		
Overvoltage Category	III	III	II
Pollution Severity Level	3	2	2
Rated Voltage	250 V (200 V)	320 V (320 V)	630 V (400 V)
Rated Impulse Voltage	4 kV	4 kV	4 kV
Rated Insulation Voltage	250 V acc. to EN 60998-1		
Rated Current	24 A		
Hole in PCB	ø 1,3 mm		
Torque	0,5 Nm		
Other specifications	Voltage data in brackets are valid for 9-32 poles types. 2-8 poles types are "no-flame" acc. to glow-wire test.		

### Material

Moulding	PA, grey, V-0
Comparative Tracking Index	2-8 poles: CTI ≥ 600; 9-32 poles: CTI 400
Insulating Group	2-8 poles: I; 9-32 poles: II
Temperature Range	-40°C up to 100°C
Terminal body	Tin plated brass
Screw	M3; zinc plated steel, blue passivated
Solder pin	ø 1 mm, tin plated copper
Wire protector	Tin plated tin bronze

### Approvals

	Current	Voltage	Group	AWG	Nm
	20	300	B	22-12 [1]	0,51
	10	300	D	22-12 [1]	0,51
	20	300	B	26 - 12	0,51
	10	300	D, E	26 - 12	0,51
	Current	Voltage	mm <sup>2</sup>		
	24	400	4,0		

[1] Min No. 26 AWG for factory-wiring only

### Options / Accessories

- Consecutive numbering
- Special marking according to drawing
- Self-adhesive marking strip BST-5,00
- Pitch of 10 mm for larger clearance and creepage distances
- Longer P.C. pins up to 95 mm
- Version with extended wire entrance
- With test holes, see 970-MP(-DS)