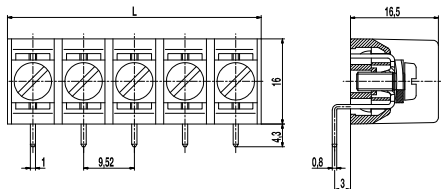


PCB connector 982-W

Screw connection, wire entrance vertical to PCB



The PCB screw connector 982-W in 9.52 mm pitch is available with 2- to 26-pole design and can be mounted side-by-side in the nominal pitch. This version is equipped with one solder pin per pole.

The conductor terminal, located vertical to the PCB, is of head contact design, whereby the screws and square washers are movably connected. For easier connection, the non-rotatably mounted square washers are automatically lifted when the screw is loosened.

Part Numbers

No. of poles	982-W	Length	Pcs
2	30.873.702	19,00	200
3	30.873.703	28,60	200
4	30.873.704	38,10	100
5	30.873.705	47,60	50
6	30.873.706	57,10	50
7	30.873.707	66,60	50
8	30.873.708	76,20	50
9	30.873.709	85,70	50
10	30.873.710	95,20	50
11	30.873.711	104,70	50
12	30.873.712	114,30	50

further number of poles on request

General Information

Pitch	9,52 mm
No. of poles	2 - 26

Technical Data

Clamping Range	<i>solid / flexible / AWG</i> 0,75 - 2,5 mm ² / 0,75 - 2,5 mm ² / 18 - 12 AWG
Rated Cross Section	2,5 mm ²
Wire Stripping Length	8,5 mm
Overvoltage Category	III
Pollution Severity Level	3
Rated Voltage	320 V
Rated Impulse Voltage	4 kV
Rated Insulation Voltage	450 V acc. to EN 60998-1
Rated Current	15 A
Hole in PCB	ø 1,6 mm
Torque	0,8 Nm
Other specifications	Per pole two conductors of identical cross-section can be connected.

Material

Moulding	PA, grey, V-0
Comparative Tracking Index	CTI ≥ 600
Insulating Group	I
Temperature Range	-40°C up to 100°C
Pressure clamp	Tin plated brass
Screw	M3,5; zinc plated steel, blue passivated
Solder pin	0,8 x 1,0 mm; tin plated brass

Approvals

	Current	Voltage	Group	AWG	Nm
	20	300	B	20 - 12	0,79
	20	300	B	20 - 12	0,79
	10	300	D, E	20 - 12	0,79

Options / Accessories

- Consecutive numbering
- Special marking according to drawing
- Crosshead screws
- Cover cap 982-A
- Securing pins BEF-983
- Tab connections