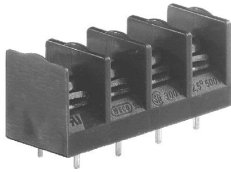


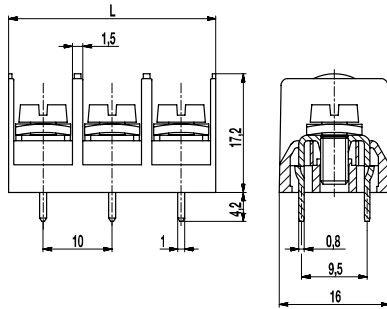
## 983-D/-ZD

PCB connector

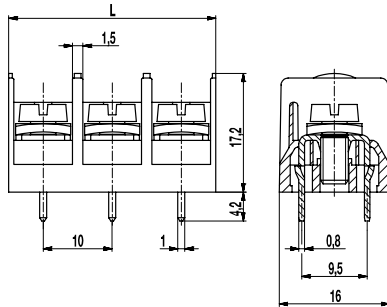
Screw connection, 2 solder pins per pole



**RoHS**  
COMPLIANT



983-D



983-ZD

The PCB connector 983-D with a pitch of 10 mm features in spite of its small dimensions, large clearance and creepage distances.

This version is equipped with two solder pins per pole and is available in 2- to 26-pole design.

The conductor terminal is of head contact design, whereby the screws and square washers are movably connected.

For easier connection, the non-rotably mounted square washers are automatically lifted when the screw is loosened.

The connector can be mounted side-by-side in the nominal pitch.

Variant "-ZD" features an additional back wall.

### Part Numbers

| No. of poles | 983-D      | 983-ZD     | Length | PU  |
|--------------|------------|------------|--------|-----|
| 2            | 20.873.802 | 20.873.872 | 20,00  | 100 |
| 3            | 20.873.803 | 20.873.873 | 30,00  | 100 |
| 4            | 20.873.804 | 20.873.874 | 40,00  | 100 |
| 5            | 20.873.805 | 20.873.875 | 50,00  | 100 |
| 6            | 20.873.806 | 20.873.876 | 60,00  | 100 |
| 8            | 20.873.808 | 20.873.878 | 80,00  | 50  |
| 10           | 20.873.810 | 20.873.880 | 100,00 | 50  |
| 12           | 20.873.812 | 20.873.882 | 120,00 | 50  |
| 14           | 20.873.814 | 20.873.884 | 140,00 | 80  |
| 16           | 20.873.816 | 20.873.886 | 160,00 | 20  |
| 18           | 20.873.818 | 20.873.888 | 180,00 | 25  |
| 20           | 20.873.820 | 20.873.890 | 200,00 | 25  |
| 22           | 20.873.822 | 20.873.892 | 220,00 | 25  |
| 24           | 20.873.824 | 20.873.894 | 240,00 | 25  |
| 26           | 20.873.826 | 20.873.896 | 260,00 | 10  |

further number of poles on request

### General Information

|              |        |
|--------------|--------|
| Pitch        | 10 mm  |
| No. of poles | 2 - 26 |



### Technical Data

|                          |   |       |        |
|--------------------------|---|-------|--------|
| Clamping Range           | <i>solid / flexible / AWG</i>                                       |       |        |
|                          | 0,5 - 2,5 mm <sup>2</sup> / 0,5 - 2,5 mm <sup>2</sup> / 20 - 12 AWG |       |        |
| Rated Cross Section      | 2,5 mm <sup>2</sup>   |       |        |
| Wire Stripping Length    | 8,5 mm ± 0,5 mm   |       |        |
| Overvoltage Category     | III   | III   | II     |
| Pollution Severity Level | 3   | 2     | 2      |
| Rated Voltage            | 500 V   | 630 V | 1000 V |
| Rated Impulse Voltage    | 6 kV  | 6 kV  | 6 kV   |
| Rated Insulation Voltage | 750 V acc. to EN 60998-1  |       |        |
| Rated Current            | 24 A  |       |        |
| Hole in PCB              | ø 1,6 mm  |       |        |
| Torque                   | 1,2 Nm  |       |        |
| Other specifications     | Per pole two wires of identical cross-section can be connected.     |       |        |

### Material

|                            |  |
|----------------------------|--|
| Moulding                   | PA, grey, V-0                          |
| Comparative Tracking Index | CTI ≥ 600                              |
| Insulating Group           | I                                      |
| Temperature Range          | -40°C up to 100°C                      |
| Pressure clamp             | Tin plated brass                       |
| Screw                      | M4; zinc plated steel, blue passivated |
| Solder pin                 | 0,8 x 1,0 mm; tin plated brass         |

### Approvals

|   | Current [A] | Voltage [V] | Group | AWG     | [Nm] |
|---|-------------|-------------|-------|---------|------|
|  | 20          | 300         | B     | 20 - 12 | 1,13 |
|  | 20          | 300         | B     | 20 - 12 | 1,13 |
|   | 10          | 300         | D, E  | 20 - 12 | 1,13 |

### Options / Accessories

- Consecutive numbering
- Special marking according to drawing
- Self-adhesive marking strip BST-10,00
- Crosshead screws
- 10 mm pin length