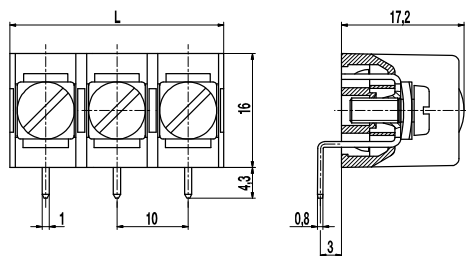


PCB connector

983-W/-ZW

Screw connection, wire entrance vertical to PCB



The PCB screw connector 983-W in 10 mm pitch is available with 2- to 26-pole design and can be mounted side-by-side in the nominal pitch. This version is equipped with one solder pin per pole.

The conductor terminal, located vertical to the PCB, is of head contact design, whereby the screws and square washers are movably connected. For easier connection, the non-rotably mounted square washers are automatically lifted when the screw is loosened.

Part Numbers

No. of poles	983-W	983-ZW	Length	PU
2	30.873.802	30.872.872	20,00	100
3	30.873.803	30.872.873	30,00	100
4	30.873.804	30.872.874	40,00	100
5	30.873.805	30.872.875	50,00	100
6	30.873.806	30.872.876	60,00	100
7	30.873.807	30.872.877	70,00	50
8	30.873.808	30.872.878	80,00	50
9	30.873.809	30.872.879	90,00	50
10	30.873.810	30.872.880	100,00	50
11	30.873.811	30.872.881	110,00	50
12	30.873.812	30.872.882	120,00	50

further number of poles on request

General Information

Pitch	10 mm
No. of poles	2 - 26



Technical Data

Clamping Range	<i>solid / flexible / AWG</i> 0,5 - 2,5 mm ² / 0,5 - 2,5 mm ² / 20 - 12 AWG
Wire Stripping Length	8,5 mm
Overvoltage Category	III
Pollution Severity Level	3
Rated Voltage	500 V
Rated Impulse Voltage	6 kV
Rated Insulation Voltage	450 V acc. to EN 60998-1
Rated Current	15 A
Hole in PCB	ø 1,6 mm
Torque	1,2 Nm
Other specifications	Per pole two wires of identical cross-section can be connected.

Material

Moulding	PA, grey, V-0
Comparative Tracking Index	CTI ≥ 600
Insulating Group	I
Temperature Range	-40°C up to 100°C
Pressure clamp	Tin plated brass
Screw	M4; zinc plated steel, blue passivated
Solder pin	0,8 x 1,0 mm; tin plated brass

Approvals

	Current	Voltage	Group	AWG	Nm
	20	300	B	20 - 12	1,13
	20	300	B	20 - 12	1,13
	10	300	D, E	20 - 12	1,13

Options / Accessories

- Consecutive numbering
- Special marking according to drawing
- Self-adhesive marking strip BST-10,00
- Cover cap 983-A
- Securing pins BEF-983
- Crosshead screws