

GST

Tabs for equipment
for plugged-in receptacles 2x 2,8/6,3; 4,8 and 6,3 DIN 46247



Technical Data

Rated Current	6 A: with receptacle 2,8; wire 1,0 mm ² (16 AWG) 16 A: with receptacle 4,8; wire 2,5 mm ² (14 AWG) 25 A: with receptacle 6,3; wire 6,0 mm ² (10 AWG)
---------------	---

Material

Tab	Nickel plated brass
-----	---------------------

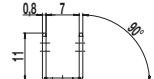
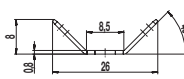
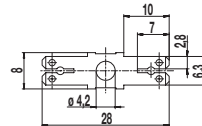
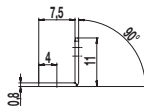
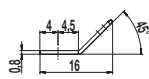
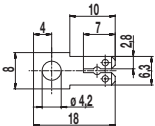
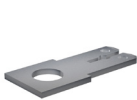
Options / Accessories

- Also available as tab connector mounted on series 307/3070 and 983-F

These tab connectors are directly mounted onto the equipment, e.g. as ground connection.
They are suitable for tab receptacles according to DIN 46247, with nominal widths 2,8; 4,8; 6,3 x 0,8.
The packaging unit for all tab connectors is 1.000 pieces.

Versions

for plugged-in receptacles 2,8/6,3



GST-0-2,8/6,3
11.351.118

GST-45-2,8/6,3
11.351.218

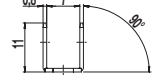
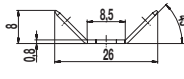
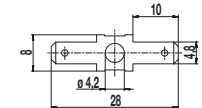
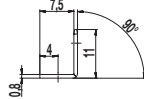
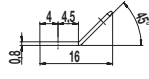
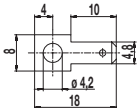
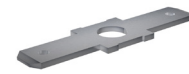
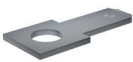
GST-90-2,8/6,3
11.351.318

GST-0-0-2,8/6,3
11.352.118

GST-45-45-2,8/6,3
11.352.218

GST-90-90-2,8/6,3
11.352.318

for plugged-in receptacles 4,8



GST-00
11.361.106

GST-045
11.361.105

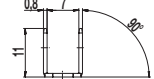
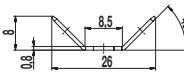
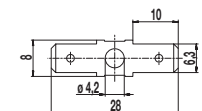
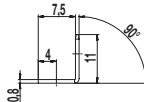
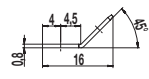
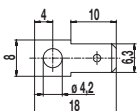
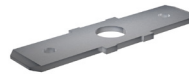
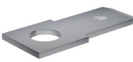
GST-090
11.361.107

GST-00-00
11.362.304

GST-045-045
11.362.305

GST-090-090
11.362.303

for plugged-in receptacles 6,3



GST-0
11.351.101

GST-45
11.351.201

GST-90
11.351.301

GST-0-0
11.352.102

GST-45-45
11.352.201

GST-90-90
11.352.301