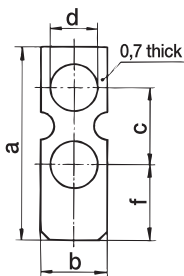
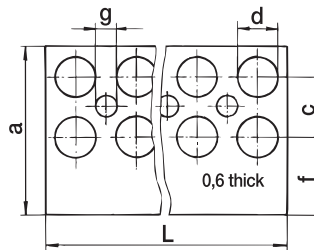


## Marking Labels BEZ-302-326(-DR)



## Marking Strips BST-302-326



### Material

**Marking Labels BEZ:** Plasticised PVC, white, matt finished on one side

**Marking Strips BST:** Rigid PVC, white, matt  
Temperature resistance both types:  
approx. 80°C/176°F

### Description

#### Marking Labels BEZ

They are fixed over the terminal strip bushes and firmed down. A fitting tool suitable for all sizes is available. The elasticity of the material causes the labels to fit firmly on the terminal strip bushes so that they cannot be lost.

On one side the labels project over the strip providing a surface for marking.

When they are to be marked on both sides, two labels can be pressed on opposed to each other.

The labels are supplied blank as standard; they can be marked by the customer using felt pen, drawing or stamp ink for instance.

#### Marking Strips BST

The marker strips are fitted together with the terminal strips on top of or below the moulding.

They are supplied as standard for 12 poles or in 600 mm/23.6 in long strips and can easily be cut by the customer for the required number of poles. They can be marked using felt pen, drawing or stamp ink before or after fitting the terminal strip.

### Options

- Marked as required.
- Marking strips BST in the required pole sizes.
- Marking strips BST with marking area on both sides.

Type Designation	suitable for all types	Dimensions a/ b/ c/ d/ f mm (in)
BEZ-302	302	19/7,3/6,5/4,5/9 (0.75/0.29/0.26/0.18/0.35)
BEZ-322	322	19/9/-/5,4/10 (0.75/0.35/-/0.21/0.39)
BEZ-323	323	24,5/9/10/5,7/10,5 (0.97/0.35/0.39/0.22/0.41)
BEZ-324	324	26,5/10/10/7,2/11,5 (1.04/0.39/0.39/0.28/0.45)
BEZ-326	326,327	32/11/13/8/12,5 (1.26/0.43/0.51/0.32/0.49)
BEZ-DR	Fitting tool, suitable for all types	

Type Designation	Poles	suitable for all types	L mm (in)	Dimensions a/ c/ d/ f/ g mm (in)
BST-302/12	12	302	96 (3.78)	21/6,5/6/10/3,2 (0.83/0.26/0.24/0.39/0.13)
BST-302/75	75	302	600 (23.6)	21/6,5/6/10/3,2 (0.83/0.26/0.24/0.39/0.13)
BST-322/12	12	322	116 (4.57)	21/-/7/13/3,8 (0.83/-/0.28/0.51/0.15)
BST-322/60	60	322	600 (23.6)	21/-/7/13/3,8 (0.83/-/0.28/0.51/0.15)
BST-323/12	12	323	120 (4.73)	28/10/7/13/3,8 (1.10/0.39/0.28/0.51/0.15)
BST-323/60	60	323	600 (23.6)	28/10/7/13/3,8 (1.10/0.39/0.28/0.51/0.15)
BST-324/12	12	324	138 (5.44)	31/10/8/14/3,5 (1.22/0.39/0.32/0.55/0.14)
BST-324/52	52	324	600 (23.6)	31/10/8/14/3,5 (1.22/0.39/0.32/0.55/0.14)
BST-326/12	12	326, 327	174 (6.85)	39/13/9/17,5/4 (1.54/0.51/0.35/0.69/0.16)
BST-326/41	41	326, 327	600 (23.6)	39/13/9/17,5/4 (1.54/0.51/0.35/0.69/0.16)