



Mantle Terminals M

with round, stationary
clamping member

Mantle Terminals MU

with flat, rotatable
clamping member

Technical Data

Rated Connecting Capacity:
See table

Material

Nickel plated brass

Description

The mantle terminals were developed and patented by WECO.

The upper section encompasses the lower section and thus prevents the limbs from bending outwards. The terminals guarantee a high degree of operational reliability and meet the requirements of the corresponding VDE regulations.

Mantle Terminals M:

Because of the rigid clamping member these types are suitable for solid wires by preference.

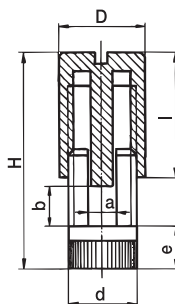
Mantle Terminals MU:

The tapered mantle terminals MU afford the advantages of type M. The flat clamping member which is mounted in the upper section in such a way that it can rotate reliably prevents damage to the wires. This design is thus particularly suitable for stranded conductors.

Three base designs are available for different scopes of application.

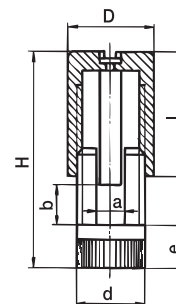
Options

- ☒ Mantle terminals for explosion-hazard areas, see page 66.
- Mantle terminals with customer specified dimensions and base designs.



Line	Connecting Capacity mm ² (AWG)	Max. Terminal space a x b mm (in)
8	3x2,5 (3x13)	2,5x5,5 (0.10x0.22)
9	2x4 (2x11)	3,1x5,5 (0.12x0.22)
10	2x6 (2x9)	3,5x7 (0.14x0.28)
11	1x16 (1x5)	5,1x5,5 (0.20x0.22)
12	2x16 (2x5)	5,1x10 (0.20x0.39)

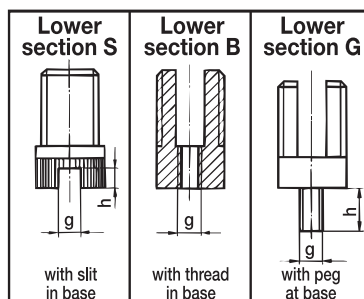
Line	Dimensions mm / in					h (s. below)		g (s. below)		
	D	d	H	I	e	Form S	Form G	Form S	Form B+G	
8	7,5 0.30	6,5 0.26	21,5 0.85	10,5 0.41	4,5 0.18	2,5 0.10	8 0.31	2,5 0.10	M3	
9	8 0.31	7 0.28	22 0.87	11 0.43	4,5 0.18	2,5 0.10	8 0.31	3,1 0.12	M4	
10	9 0.35	8 0.31	26 1.02	13 0.51	5 0.20	2,5 0.10	8 0.31	3,5 0.14	M4	
11	11,5 0.45	10 0.39	24 0.94	12 0.47	5,5 0.22	—	10 0.39	—	M5	
12	11,5 0.45	10 0.39	32 1.26	15,5 0.61	6 0.24	2,5 0.10	10 0.39	5 0.20	M5	



Line	Connecting Capacity mm ² (AWG)	Max. Terminal space a x b mm (in)
17	2x4 (2x11)	3,1x5,5 (0.12x0.22)
18	2x6 (2x9)	3,5x7 (0.14x0.28)
19	1x16 (1x5)	5,1x5,5 (0.20x0.22)
20	2x16 (2x5)	5,1x10 (0.20x0.39)

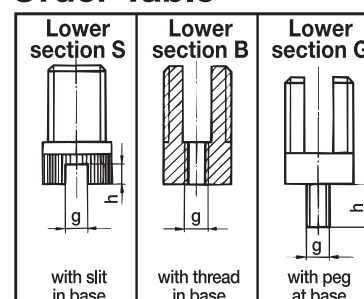
Line	Dimensions mm / in					h (s. below)		g (s. below)		
	D	d	H	I	e	Form S	Form G	Form S	Form B+G	
17	8 0.31	7 0.28	22 0.87	11 0.43	4,5 0.18	2,5 0.10	8 0.31	2,5 0.10	M4	
18	9 0.35	8 0.31	26 1.02	13 0.51	5 0.20	2,5 0.10	8 0.31	3,5 0.14	M4	
19	11,5 0.45	10 0.39	24,5 0.96	12,5 0.49	5,5 0.22	—	10 0.39	—	M5	
20	11,5 0.45	10 0.39	32 1.26	15,5 0.61	6 0.24	2,5 0.10	10 0.39	5 0.20	M5	

Order Table



Line	Type-Designat.	Type-Designat.	Type-Designat.
8	8-MS	8-MB	8-MG
9	9-MS	9-MB	9-MG
10	10-MS	10-MB	10-MG
11	—	11-MB	11-MG
12	12-MS	12-MB	12-MG

Order Table



Line	Type-Designat.	Type-Designat.	Type-Designat.
17	17-MUS	17-MUB	17-MUG
18	18-MUS	18-MUB	18-MUG
19	—	19-MUB	19-MUG
20	20-MUS	20-MUB	20-MUG